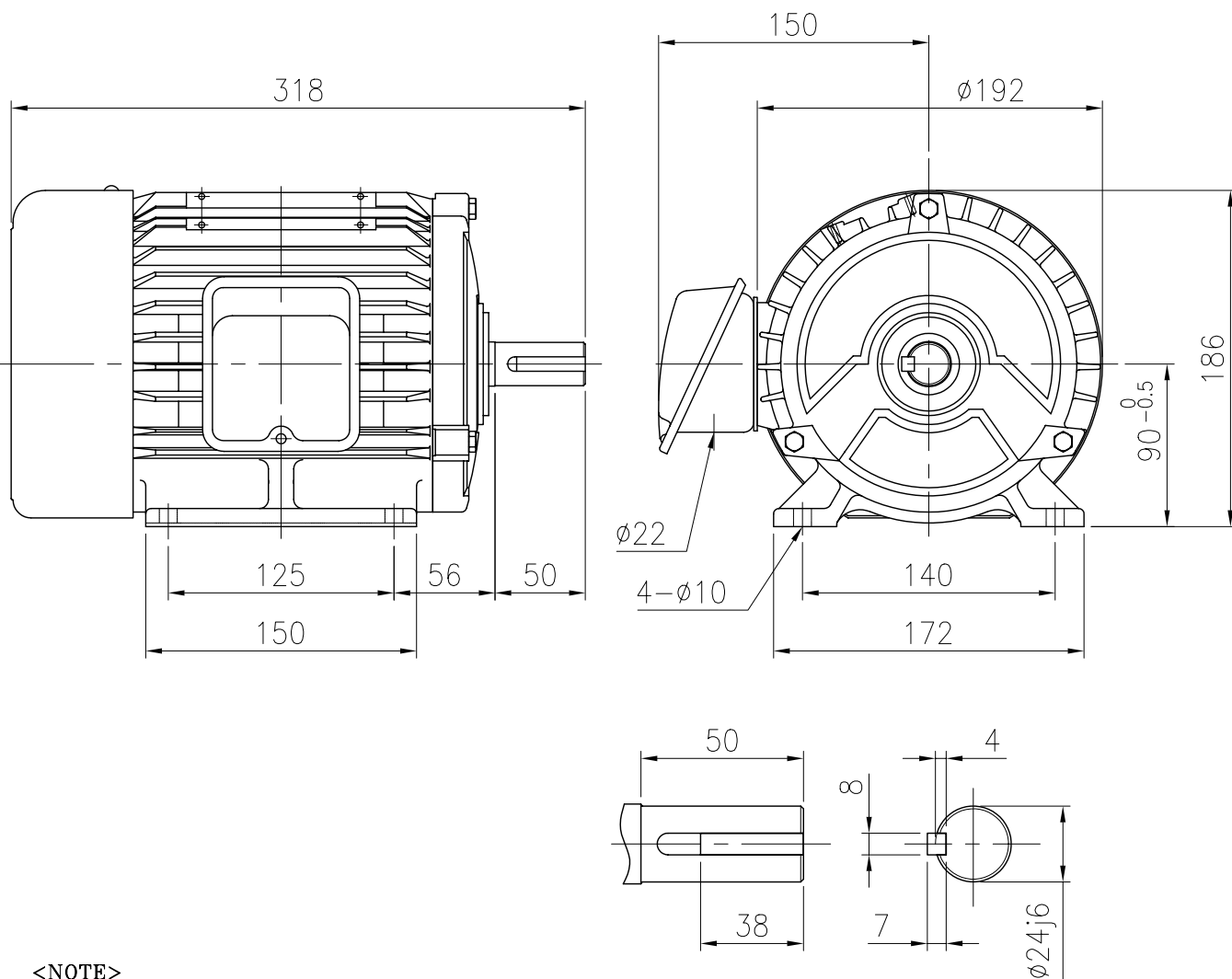


OUTLINE DIMENSION



<NOTE>

1. TYPE : TEFC(Totally Enclosed Fan Cooled)
FOOT MOUNTED TYPE
2. THE TOLERANCE FOR THE KEY DIMENSIONS
IS IN ACCORDANCE WITH KS B 1311-84
3. THE TERMINAL BOX MAY BE ROTATED
STEPS OF 90°

SHAFT EXTENSION

4. CAST IRON FRAME AND END BRACKETS.
5. STAINLESS STEEL NAME PLATE WITH
CONNECTION DIAGRAM.
6. STEEL FAN COVER AND TERMINAL BOX.

FRAME NO.	OUTPUT (kW)			INS. CLASS	PRO-TEC-TION	RA-TING	BEARING NO.					
							2 P		4 P		6 P	
	2P	4P	6P				DRIVE	OPP.D.	DRIVE	OPP.D.	DRIVE	OPP.D.
90L	-	-	0.75	B	IP44	CONT.	-	-	-	-	6205ZZ	6204ZZ

UNIT	mm	SCALE	$\frac{N}{S}$	PROJECT'N	3rd Angle	TITLE	OUTLINE
DESIGNED		CHECKED		APPROVED			
2008.07.09 S.M.KIM		2008.07.09 J.H.JO		2008.07.09 H.J.KIM		SUBJECT	90L, B3
HIGEN Motor Co., Ltd.						DWG. NO.	DW-KMI-01HK8